

SCREEN LATKY

K1

WHITE - WHITE



60002002

GREY - WHITE



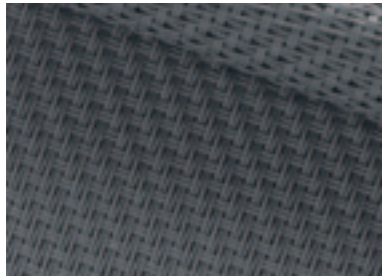
60001002

PEARL - GREY



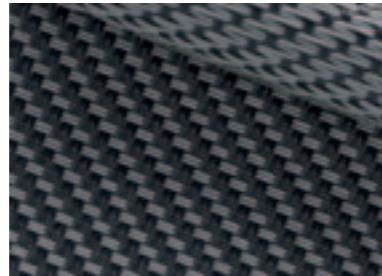
60007007

GREY - GREY



60001001

GREY - CHARCOAL



60001010

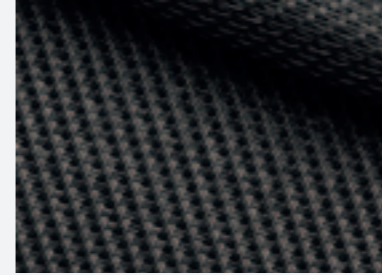
CHARCOAL - CHARCOAL



60010010

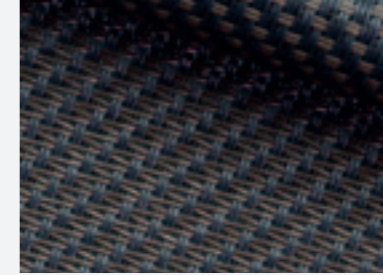
K1

PURE BLACK



60030030

CHARCOAL - BRONZE



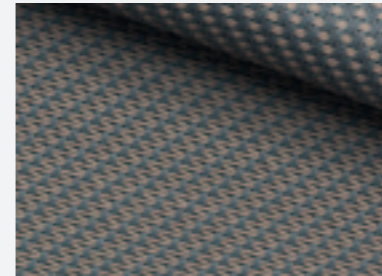
60010011

SANDSTONE



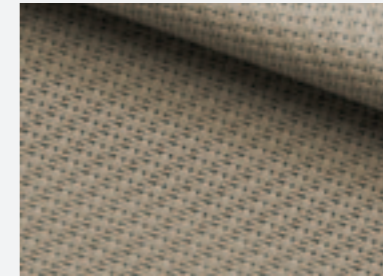
60033033

GREY - SAND



60001003

LINEN - LINEN



60008008

LINEN - WITE

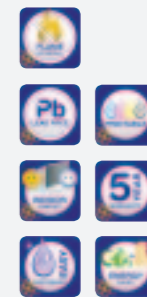


60008002

	composition	weight [g/m ²]	thickness [mm]	light fastness blue scale level EN ISO 105 B02 EN ISO 105 B04	openness factor [%]	EN 14501				application
						TS [%]	RS [%]	AS [%]	TV [%]	
White - White	42% glasfibre + 58% pvc	525	0.74	>7	5	21/21	65.9/66.3	13.2/12.7	21.2/21.2	interior / exterior SERGE 600
Grey - White						6.7/6.7	37.2/26.9	56.2/66.4	6.6/6.6	
Pearl - Grey						10.1/10.1	38.3/39.4	51.7/50.5	8.4/8.4	
Grey - Grey						3.5/3.5	15.1/15.1	81.3/81.4	3.6/3.6	
Grey - Charcoal						3.6/3.6	9.9/12.6	86.5/83.8	3.6/3.6	
Charcoal - Charcoal						3.6/3.6	5.0/4.8	91.4/91.6	3.6/3.6	
Tearing resistance (daN) UNE EN ISO 4674-1 method 2 - Warp: 8.5, Weft: 7.5 Breaking strength (daN/5cm) UNE EN ISO 1421 - Warp: 260, Weft: 225 Flame retardant - Certificate on request										



	composition	weight [g/m ²]	thickness [mm]	light fastness blue scale level EN ISO 105 B02 EN ISO 105 B04	openness factor [%]	EN 14501				application
						TS [%]	RS [%]	AS [%]	TV [%]	
Pure Black	42% glasfibre + 58% pvc	525	0.74	>7	5	5.9	3.7	90.4	5.9	interior / exterior SERGE 600
Charcoal - Bronze						6.1	6.5/6.0	87.4/87.9	6.1	
Sandstone						7.1	20.4/20.5	72.4/72.5	6.8	
Grey - Sand						4.7	26.5/21.5	68.8/73.8	4.5	
Linen - Linen						14.9	52.5/52.7	32.5/32.4	12.9	
Linen - Wite						15.5	58.2/56.4	26.4/28.1	13.7	
Tearing resistance (daN) UNE EN ISO 4674-1 method 2 - Warp: 8.5, Weft: 7.5 Breaking strength (daN/5cm) UNE EN ISO 1421 - Warp: 260, Weft: 225 Flame retardant - Certificate on request										



K2

WHITE - WHITE



61002002

GREY - WHITE



61001002

PEARL - GREY



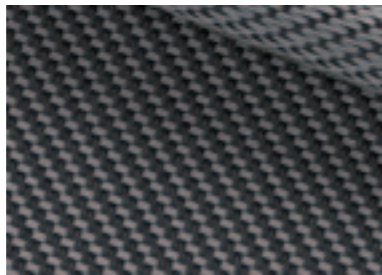
61007007

GREY - GREY



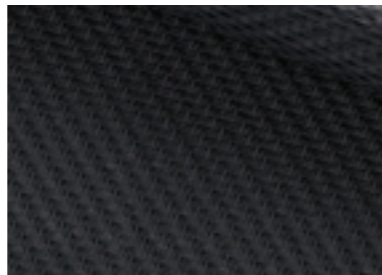
61001001

GREY - CHARCOAL



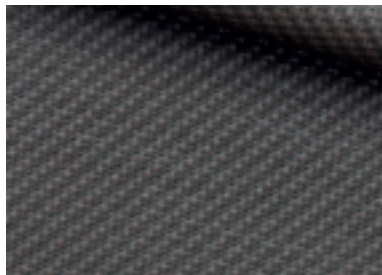
61001010

CHARCOAL - CHARCOAL



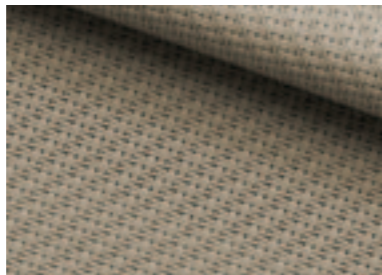
61010010

BRONZE - BRONZE



61011011

LINEN - LINEN



61008008

	composition	weight [g/m ²]	thickness [mm]	light fastness blue scale level EN ISO 105 B02 EN ISO 105 B04	openness factor [%]	EN 14501				application						
						TS [%]	RS [%]	AS [%]	TV [%]							
White - White	42% glasfibre + 58% pvc	638	0.78	>7	1	12.8	71.3	15.9	12.9	interior / exterior						
Grey - White						2.2	44.8/31.2	53/66.6	2							
Pearl - Grey						2.8	36.9	60.3	2.1							
Grey - Grey						2.4	17.4	80.2	2.2							
Grey - Charcoal						1.2	10.5/14	88.3/84.8	1.2							
Charcoal - Charcoal						1.1	5.9	93	1.1							
Bronze - Bronze						1.4	8.6	90	1.3							
Linen - Linen						5.9	54.2	39.9	3.7							
Tearing resistance (daN) UNE EN ISO 4674-1 method 2 - Warp: 5.9, Weft: 6.2 Breaking strength (daN/5cm) UNE EN ISO 1421 - Warp: 321, Weft: 277 Flame retardant - Certificate on request																

SERGE 1%



K3

CHARCOAL



50922047

CONCRETE



50922167

GLOSSY



50922065

SILVER



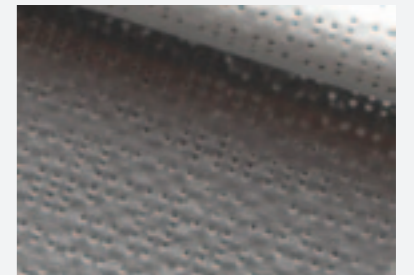
50922048

SILVER BLACK



50922045

SILVER - WHITE



50922051

SANDY BEIGE



50922135

WHITE



50922044

	composition	weight [g/m ²]	thickness [mm]	light fastness grey scale level EN ISO 105 B04	openness factor [%]	EN 14501				application						
						TS [%]	RS [%]	AS [%]	TV [%]							
Charcoal	Polyester / PVC	420	0.45	5/5	4	5	8	87	5	interior / exterior						
Concrete						6	19	75	5							
Glossy						10	46	44	7							
Silver						8	46	46	8							
Silver Black						4	35	61	4							
Silver - White						12/12	49/70	39/18	11/11							
Sandy Beige						11	46	43	8							
White						19	68	13	17							
Tear strength (daN) DIN 53.363 - Warp: 45, Weft: 20 Tensile strength (daN/5cm) EN ISO 1421 - Warp: 310, Weft: 210 Flame retardant - certificate on request																

SOLTIS® 92



K4

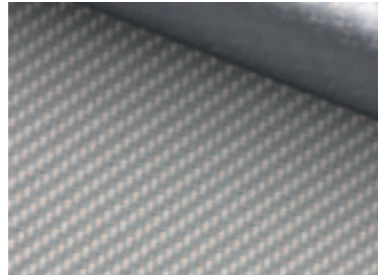
+7%

WHITE - WHITE



6BO002002

WHITE - PERL GREY



6BO002007

PEARL GREY - PEARL GREY



6BO007007

WHITE - GREY



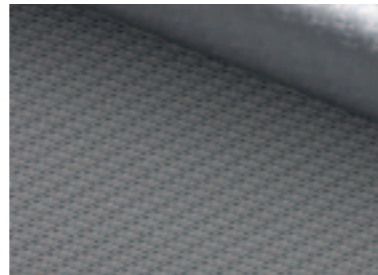
6BO001002

OYSTER SHELL



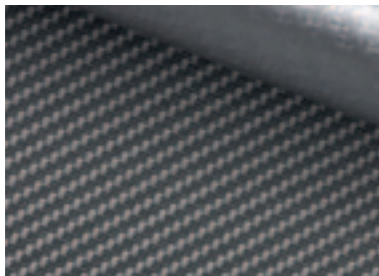
6BO033001

GREY - GREY



6BO001001

GREY - CHARCOAL



6BO001010

CHARCOAL - CHARCOAL



6BO010010

	composition	weight [g/m ²]	thickness [mm]	light fastness blue scale level EN ISO 105 B04	openness factor [%]	EN 14501				application
						TS [%]	RS [%]	AS [%]	TV [%]	
White - White	33% GLASFIBRE 47% PVC 20% PVC LAMINATE	678	0.73	>	0	0	68.8/33.7	31.2/66.3	0	interior / exterior
White - Perl Grey						0	47.8/33.2	52.2/66.8	0	
Pearl Grey - Pearl Grey						0	35.5/34	64.5/66	0	
White - Grey						0	40.3/33.7	59.7/66.3	0	
Oyster Shell						0	18.2/33.4	81.8/66.6	0	
Grey - Grey						0	17.2/33.1	82.8/66.9	0	
Grey - Charcoal						0	11/33.7	89/66.3	0	
Charcoal - Charcoal						0	6.2/33.4	93.8/66.6	0	

Tearing resistance (daN) UNE EN ISO 4674-1 method 2 - Warp: 8.5, Weft: 9
 Breaking strength (daN/5cm) UNE EN ISO 1421 - Warp: 224.2, Weft: 176.6
 Flame retardant - Certificate on request

SERGE 600 BO LUNAR

